



1½", 2" & 3" Self-Priming Centrifugal Pump Instruction Manual

Read these instructions and the instructions covering operation of the pump drive unit. Do not operate the gas engine (if so equipped) until you have put oil in the engine. Do not run the pump dry. Always fill the pump with water or the fluid being pumped before starting the drive unit to avoid premature pump seal failure.

The gas engine (if so equipped) is shipped with no oil in it. Consult your engine owners manual for specific oil recommendations and maintenance procedures. For engine warranty service contact your local engine dealer.

Make certain that all hose and pipe connections are air tight. An air leak in the suction line may prevent priming and will reduce the capacity of the pump.

Always place the pump as close to the liquid to be pumped as possible. Keep the suction line short and with few bends. Keep the pump and engine on a level foundation. A poor foundation and a heavy suction hose (made heavier when "primed" full of liquid) could result in a pump "down the hole". It is not necessary to drain the pump body after use, unless there is a danger of freezing.

There are important instructions regarding the preparation of the engine for long periods without use. (Reference the engine instruction manual.) Under these conditions, drain the pump. Leave all plugs (fill and drain) out of the pump. Always store the pump unit in a heated, dry building.

When pumping dirty water or liquids containing solids, always use a pump strainer on the end of the suction line.

There are no points on the pump that need lubrication. The pump seal is cooled and lubricated by the fluid being pumped.

WARNING! Do Not use with Flammable Liquids.

Do not pump flammable liquids or other hazardous liquids with this pump. Failure to follow this warning can result in explosion, serious bodily injury or death. For safe operation read and follow the safety precautions in the following owners manual. Note: Engine warranty service available at authorized Briggs & Stratton and Honda dealers.



DISASSEMBLY INSTRUCTIONS:

1. Remove the 10 body screws (12720), lock washers (V07018) and nuts (V07019) from the pump assembly. Remove the body from the pump assembly.



2. Remove the check valve (12705) from the volute (12702A). Remove the one upper volute screw (12900) and the two smaller volute screws (12725) from the volute. Remove the volute from the remaining pump assembly.

For 3" PUMP

Remove the check valve (12705) from the volute (13702). Remove the one upper volute screw (12900) and the two smaller volute screws (12725) from the volute. Remove the volute from the remaining pump assembly.



3. Remove the impeller bolt (12765A) from the impeller (12771A/12772). Remove the impeller bolt gasket (12774VA) from the impeller.

For 3" PUMP

Remove the impeller bolt (12765A) from the impeller (13772). Remove the impeller bolt gasket (12774VA) from the impeller.



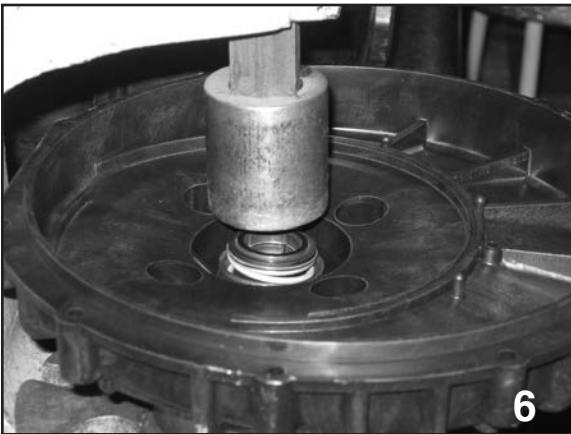


4. Screw the supplied 7/16-14 hex head cap screw into the impeller snout. As the bolt is tightened the impeller will be pried off of the shaft of the drive unit. Remove the 7/16-14 screw once the impeller has been removed from the drive unit.



If the pump impeller is going to be reused the ceramic seal half (12713) should be removed from the impeller at this time. The impeller key (12902A) located behind the ceramic seal half should be replaced at this time also.

5. Remove the four bracket screws (12715A), rear bracket washers (12901), and screw head O-rings (12717) from the rear bracket using a 1/2" socket. With the four bracket screws removed the rear bracket can now be removed from the drive unit.



6. Remove the carbon seal half from the rear bracket. This may be done by using a round object such as a wrench socket and tapping it gently with a hammer. The seal is very fragile so take care not to crack the seal if it will be reused.

With the pump completely disassembled; clean all of the reusable parts thoroughly, removing any traces of old gasket material and trapped or dried liquids that were run through the pump.

At this time, it may be necessary to polish the drive unit shaft to remove any corrosion that may have formed.

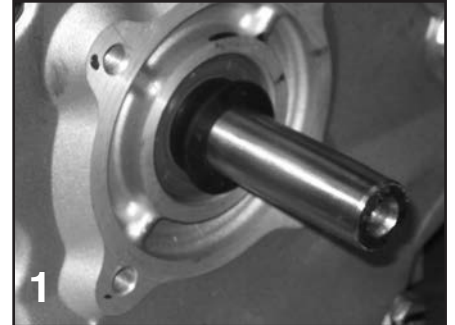


ASSEMBLY INSTRUCTIONS

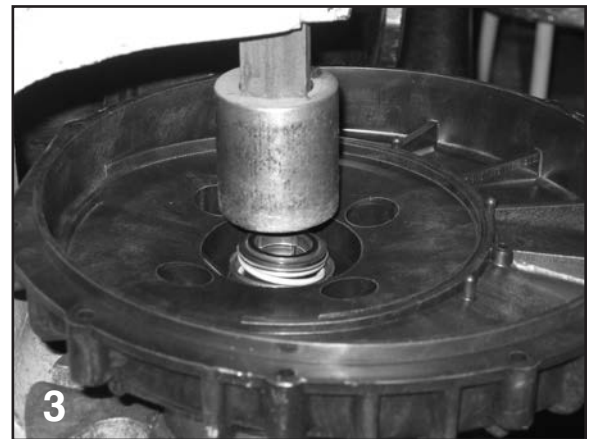
1. Install the pump slinger (12706) on to the drive unit shaft. The slinger should be slid all the way back on the shaft of the drive unit so that the slinger covers the step on the drive unit shaft as shown.



3. Place the seal O-ring (12710) behind the lip of the carbon seal half. The carbon seal half (12713) should now be installed into the rear bracket as shown at right.

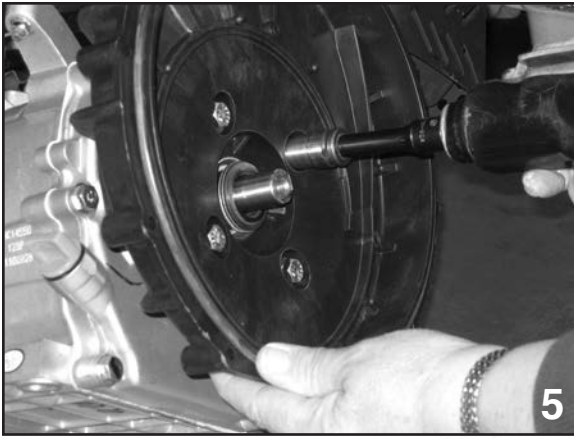


3. To install the carbon seal half into the rear bracket use a tool such as a 1 1/2" pipe nipple or arbor press to give even pressure on the metal flange of the seal housing during installation. Gently press the seal into position until it bottoms.



4. Clean the threads of the bracket screws (12715A) thoroughly. Once clean, install the four flat washers (12901) and four screw head O-rings (12717) onto each of the bracket screws.





5. Install the rear bracket onto the drive unit using the bracket screw assemblies from the previous step. The handle of the rear bracket should be to the top of the drive unit. Tighten the screws securely.



6. Verify that the impeller hex nut (12775A) is located at the bottom of the impeller snout, it should be installed now. A very light press fit may be required to install the nut into its cavity. Install the ceramic seal half into the impeller. The seal half is pressed into the hub of the impeller by using an arbor press or similar tool that will provide a uniform press fit. The outside diameter of the rubber boot may be sparingly coated with silicone to ease installation. Be absolutely sure that the ceramic seal half is bottomed out and installed squarely. If the installation is not square, seal wobble will occur leading to premature seal failure. Care must be used when handling the seal to not scratch the seal surface.



7. Place the impeller key (12902A) in the slot located inside the impeller snout. The impeller (12771A/12772) is now ready to be slid onto the drive unit shaft.

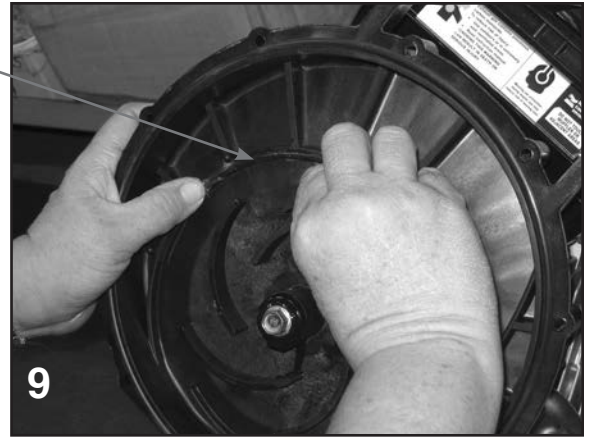
8. Secure the impeller to the drive unit shaft with the impeller bolt gasket (12774VA) and impeller bolt (12765A). Tighten the impeller bolt until snug.

For 3" PUMP

Place the impeller key (12902A) in the slot located inside the impeller snout. The impeller (13772) is now ready to be slid onto the drive unit shaft. Secure the impeller to the drive unit shaft with the impeller bolt gasket (12774VA) and impeller bolt (12765A). Tighten the impeller bolt until snug.



9. Install the O-ring segment (12754) onto the rear bracket as shown.



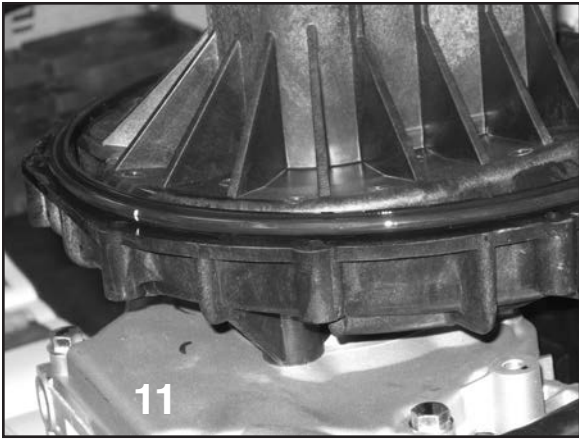
10. Install the volute (12702A) onto the rear bracket using the three volute screws (1-(12900), 20(12725)). Install the check valve (12705) onto the snout of the volute. The drive unit should be turned over a few times to check for clearance between the impeller and volute. A small amount of drag between the impeller and volute will cause no problem, however, if the drive unit will not turn over because of the lack of clearance a bracket shim may have to be used.



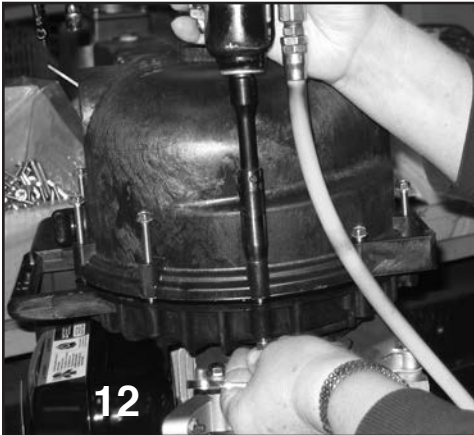
For 3" PUMP

Install the volute (13702) onto the rear bracket using the three volute screws (1-(12900), 20(12725)). Install the check valve (12705) onto the snout of the volute. The drive unit should be turned over a few times to check for clearance between the impeller and volute. A small amount of drag between the impeller and volute will cause no problem, however, if the drive unit will not turn over because of the lack of clearance a bracket shim may have to be used.





11. Place the pump body O-ring (12719A) around the outside flange of the rear bracket. The O-ring may be sparingly lubricated with silicone to ease installation of the pump body in the next step.



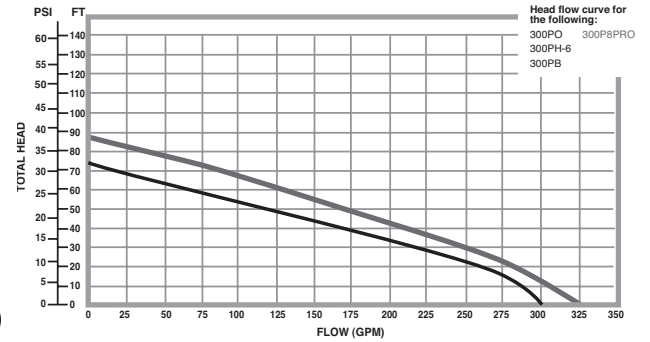
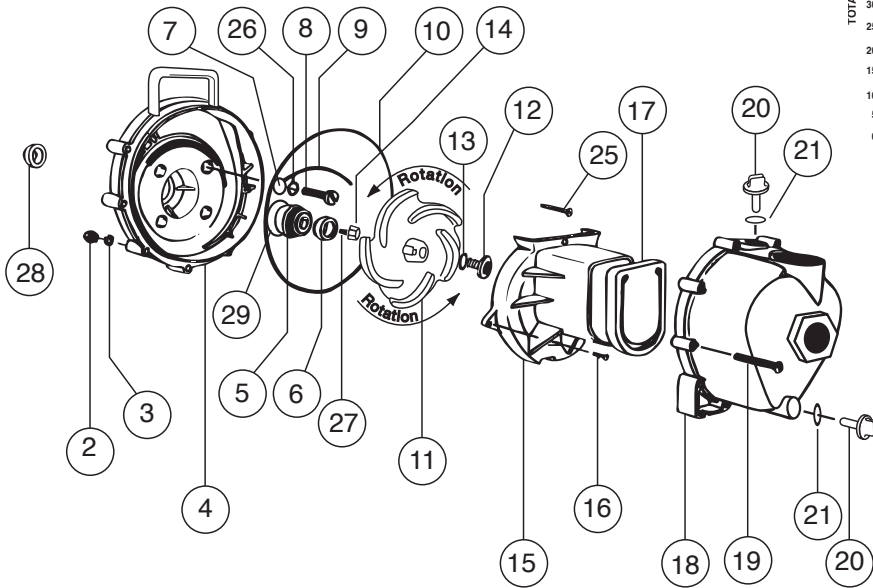
12. Install the pump body (12712) as shown below with the outlet flange facing up. Install the 10 body screws (12720), 10 lock washers (V07018), and 10 nuts (V07019) to secure the pump body to the rear bracket. Tighten the bolts securely all the way around.

For 3" PUMP

12. Install the pump body (13712) with the outlet flange facing up. Install the 10 body screws (12720), 10 lock washers (V07018), and 10 nuts (V07019) to secure the pump body to the rear bracket. Tighten the bolts securely all the way around.



The pump is now ready for operation.

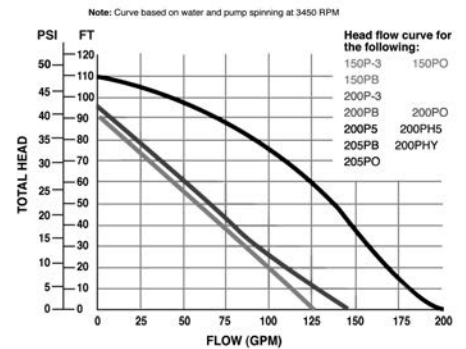


| Head (FT) | 0 | 11 | 23 | 34 | 46 | 57 | 69 | 80 |
|----------------|-----|-----|-----|-----|-----|-----|----|----|
| Pressure (PSI) | 0 | 5 | 10 | 15 | 20 | 25 | 30 | 35 |
| Flow (GPM) | 325 | 300 | 280 | 235 | 190 | 150 | 90 | 20 |

Note: Curve based on water and pump spinning at 3450 RPM

| Head (FT) | 0 | 11 | 23 | 34 | 46 | 57 | 69 |
|----------------|-----|-----|-----|-----|-----|----|----|
| Pressure (PSI) | 0 | 5 | 10 | 15 | 20 | 25 | 30 |
| Flow (GPM) | 300 | 285 | 240 | 190 | 145 | 85 | 15 |

Note: Curve based on water and pump spinning at 3450 RPM



| Head (FT) | 0 | 11 | 23 | 34 | 46 | 57 | 69 | 80 | 92 |
|----------------|-----|-----|----|----|----|----|----|----|----|
| Pressure (PSI) | 0 | 5 | 10 | 15 | 20 | 25 | 30 | 35 | 40 |
| Flow (GPM) | 125 | 110 | 95 | 80 | 70 | 50 | 30 | 15 | 0 |

| Head (FT) | 0 | 11 | 23 | 34 | 46 | 57 | 69 | 80 | 92 |
|----------------|-----|-----|-----|----|----|----|----|----|----|
| Pressure (PSI) | 0 | 5 | 10 | 15 | 20 | 25 | 30 | 35 | 40 |
| Flow (GPM) | 140 | 120 | 105 | 85 | 70 | 50 | 30 | 15 | 0 |

| Head (FT) | 0 | 11 | 23 | 34 | 46 | 57 | 69 | 80 | 92 | 103 |
|----------------|-----|-----|-----|-----|-----|-----|-----|----|----|-----|
| Pressure (PSI) | 0 | 5 | 10 | 15 | 20 | 25 | 30 | 35 | 40 | 45 |
| Flow (GPM) | 195 | 180 | 170 | 155 | 145 | 125 | 110 | 85 | 60 | 20 |

Note: Curve based on water and pump spinning at 3450 RPM

| ITEM | DESCRIPTION | QTY. | 2" PUMP | 1-½" PUMP | 3" PUMP |
|-------|----------------------------|------|----------------|-----------------|---------|
| 2 | Body Nuts SS | 10 | V07019 | V07019 | V07019 |
| 3 | Lock Washer SS | 10 | V07018 | V07018 | V07018 |
| 4 | Poly Pump Rear Bracket | 1 | 12703A | 12703A | 12703A |
| 5 & 6 | Seal Assembly*+ | 1 | 12713 | 12713 | 12713 |
| 7 | Screw Head O-Ring*+ | 4 | 12717 | 12717 | 12717 |
| 8 | Bracket Screw SS | 4 | 12715A | 12715A | 12715A |
| 9 | O-Ring Segment*+ | 1 | 12754 | 12754 | 12754 |
| 10 | Body O-Ring*+ | 1 | 12719A | 12719A | 12719A |
| 11 | Poly Pump Impeller+ | 1 | 12772 (5 Vane) | 12771A (3 Vane) | 13772 |
| 12 | Impeller Bolt SS | 1 | 12765A | 12765A | 12765A~ |
| 13 | Impeller Bolt Gasket*+ | 1 | 12774VA | 12774VA | 12774VA |
| 14 | Impeller Hex Nut | 1 | 12775A | 12775A | 12775A |
| 15 | Poly Pump Volute | 1 | 12702A | 12702A | 13702 |
| 16 | Volute Screw SS | 2 | 12725 | 12725 | 12725 |
| 17 | Poly Pump Check Valve+ | 1 | 12705 | 12705 | 12705 |
| 18 | Poly Pump Body Assy. | 1 | 12712A | 12711A | 13712 |
| 19 | Body Screws SS | 10 | 12720 | 12720 | 12720 |
| 20 | Prime/Drain Plug | 2 | 12777 | 12777 | 13777 |
| 21 | Prime/Drain Plug O-Ring*+ | 2 | UV15163 | UV15163 | 13778 |
| 25 | Upper Volute Screw SS | 1 | 12900 | 12900 | 12900 |
| 26 | Rear Bracket Washer SS | 4 | 12901 | 12901 | 12901 |
| 27 | Impeller Key | 1 | 12902A | 12902A | 12902A |
| 28 | Poly Pump Slinger*+ | 1 | 12706 | 12706 | 12706 |
| 29 | O-Ring for Seal Assy.*+ | 1 | 12710 | 12710 | 12710 |
| N/S | Bearing Pedestal-¾" Shaft | 1 | 12882A | 12882A | 12882A |
| N/S | Pump Repair Kit (Items +) | 1 | 12000A | 12000A | 13000 |
| N/S | Pump Seal O-Ring (Items *) | 1 | 12999A | 12999A | 13999 |

~Note: 300P8 uses 13765 Impeller Bolt in place of the 12765A Impeller Bolt.
(Viton & Buna Seals available upon request.)